

054299

RECEIVED
LARAMIE COUNTY
CHEYENNE, WY.

'89 FEB 17 AM 10 25

CERTIFIED LAND CORNER RECORDATION

DESCRIPTION OF CORNER EVIDENCE FOUND, AND ORIGINAL RECORD (if known)

S.16 S.15
S.21 S.22
T.13N., R.70W.

Found no evidence of previous monumentation.

G.L.O. Record: Granite boulder 18"x10"x6" set by J. Wesley Hammond, October 22, 1872.

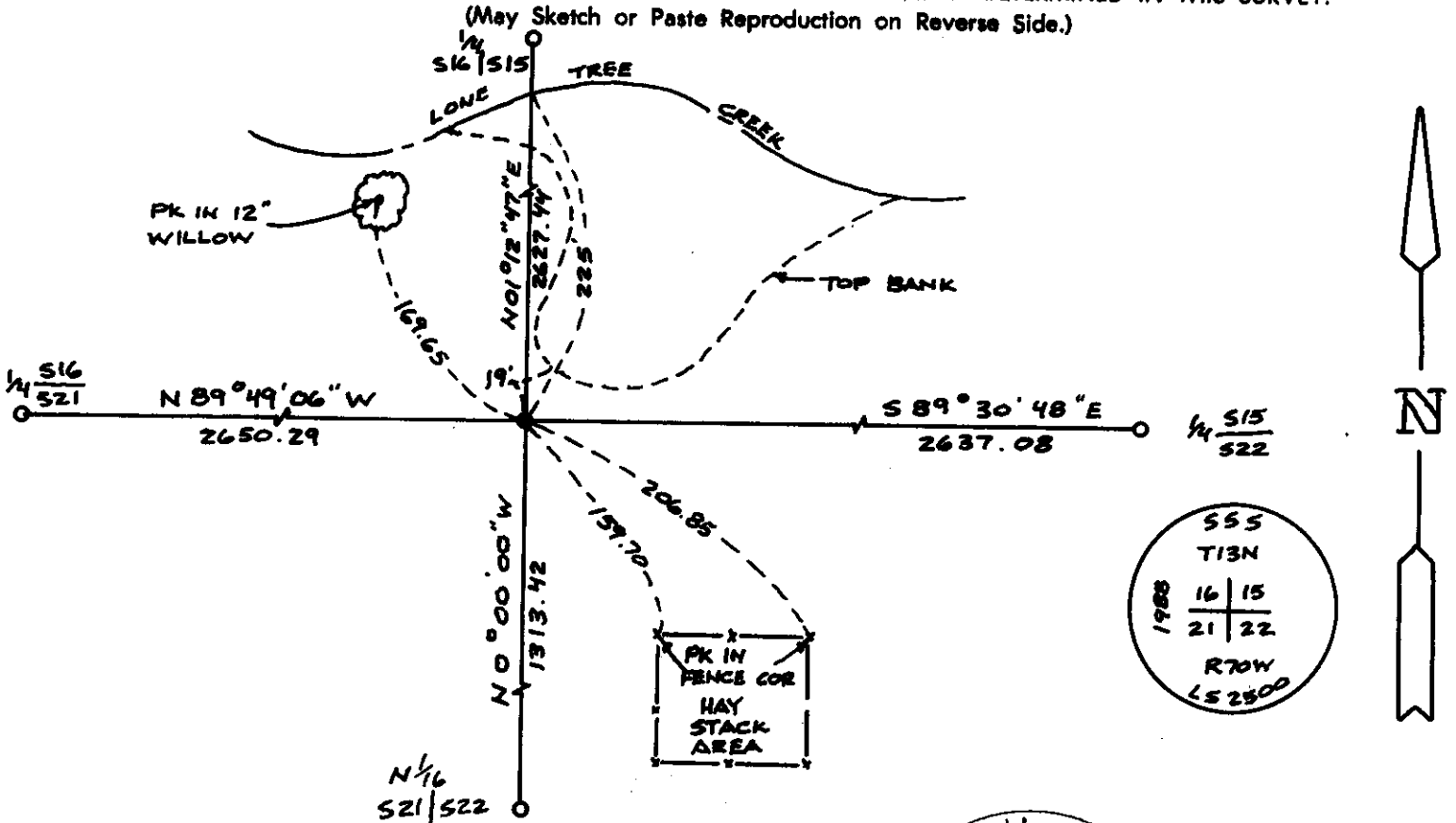
DESCRIPTION OF MONUMENT AND ACCESSORIES ESTABLISHED TO PERPETUATE THE ORIGINAL LOCATION OF THIS CORNER:

At the corner: Set 5/8"x18" rebar with 2" Aluminum Cap flush in meadow at proportionate distance and stamped as shown.

Accessories : See ties below.

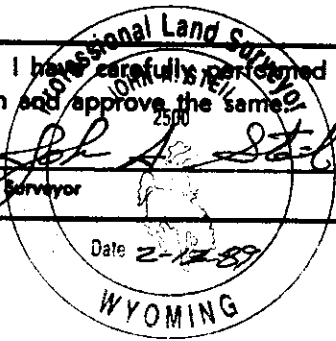
SKETCH, WITH COURSE AND DISTANCE TO ADJACENT CORNER IF DETERMINED IN THIS SURVEY.

(May Sketch or Paste Reproduction on Reverse Side.)



I, John A. Steil certify that I have carefully performed or reviewed the work done on the diagrammed corner as reported on this recordation form and approve the same.

Signature of Surveyor: John A. Steil L.S. 2500
Registration No.



STATE OF WYOMING,
Office of Clerk and Recorder,
County of _____

This "corner record" was filed for record on the _____ day of _____, 19____, was noted on the cross-index plat and is assigned page No. _____, in book No. _____.

County Official: James C. Whitehead

Cross Index No. N-13	T. 13N	R. 70W	Mer 6th
_____	T. _____	R. _____	Mer.
_____	T. _____	R. _____	Mer.
_____	T. _____	R. _____	Mer.
_____	T. _____	R. _____	Mer.
_____	T. _____	R. _____	Mer.
_____	T. _____	R. _____	Mer.